

Market Mood



15th July 2025

Market Mood



LTP 25082.32

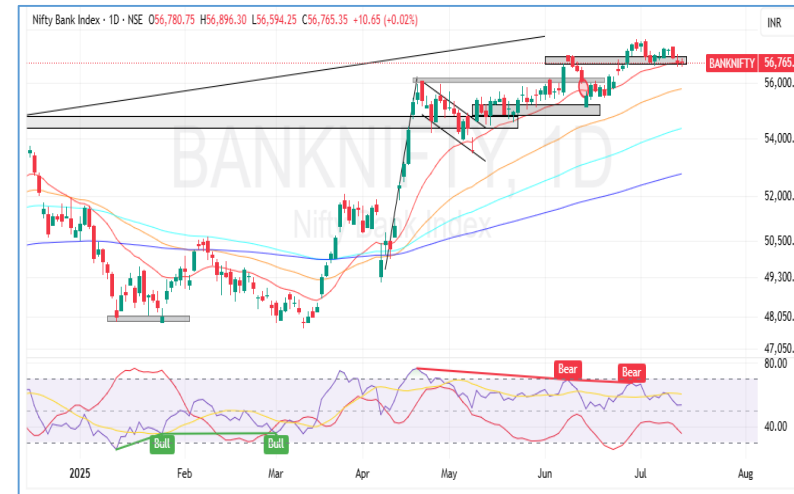
R1 25200

R2 25300

S1 25000

S2 24900

- The Nifty 50 index opened on a flat note, and saw a sustained selling pressure that pushed the index towards the 25,050 level. At this point, the index entered a phase of consolidation. The Nifty spent a significant portion of the day hovering around the 25,000–25,050 range before witnessing a notable buying surge in the final hour of trading. By the close, the Nifty had declined by 67.55 points, settling at 25,082.30.
- From a technical perspective, index formed a small bearish candlestick with a long lower wick, indicating strong buying interest at lower levels during the session.
- Looking ahead, a decisive break below the 25,000 level could lead to a retest of the 24,900 support zone. Conversely, a sustained move above the 25,200 mark would likely signal the potential for a resumption of the bullish trend, with the next key resistance at 25,300.



LTP 56765.35

R1 57150

R2 57400

S1 56500

S2 56300

- Bank Nifty closed at 56,765 and formed a Doji candle on the daily chart, reflecting a state of indecision between buyers and sellers near the upper end of the recent range. Despite multiple attempts, the index has struggled to break above the 57,400 mark decisively. The ADX reading at 21.30 suggests that trend strength is weakening, while the RSI around 53 also signals lack of clear directional momentum.
- Overall, the trend remains sideways, with the index oscillating between support at 56,300 and resistance at 57,400. A breakout beyond this zone with volume confirmation is needed for a fresh directional move. Until then, range-bound action is likely to persist.

Global Market:

| | | | | |
|--------------------------|---|-----------|--------|-------|
| | Dow Jones Futures <small>CFD</small> | 44,468.18 | 8.53 | 0.02 |
| 15 Jul, 2025 07:50 IST | | | | |
| | S&P 500 <small>CFD</small> | 6,268.56 | 8.81 | 0.14 |
| 15 Jul, 2025 01:29 IST | | | | |
| | Nasdaq <small>CFD</small> | 20,640.33 | 54.80 | 0.27 |
| 15 Jul, 2025 01:29 IST | | | | |
| | FTSE | 8,998.06 | 56.94 | 0.63 |
| 14 Jul, 2025 21:20 IST | | | | |
| | CAC | 7,808.17 | -21.12 | -0.27 |
| 14 Jul, 2025 21:20 IST | | | | |
| | DAX | 24,160.64 | -94.67 | -0.39 |
| 14 Jul, 2025 21:45 IST | | | | |

Sentiment Gauge

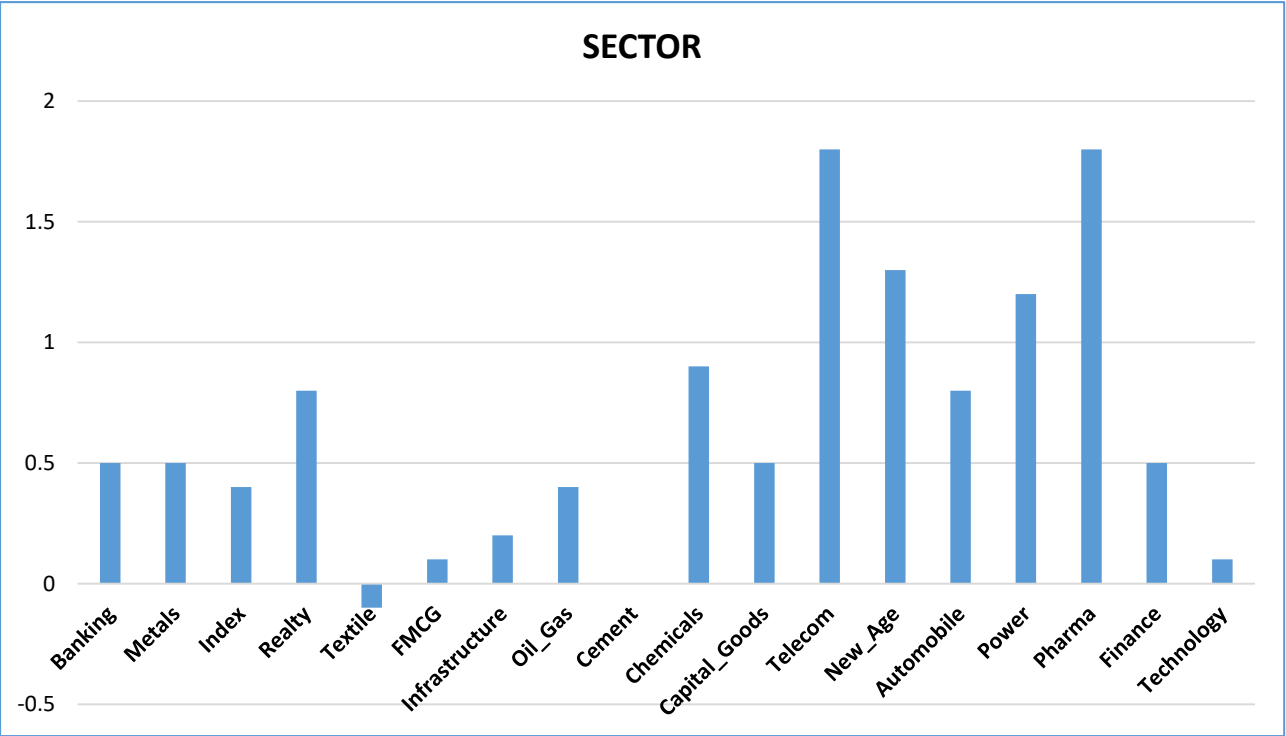
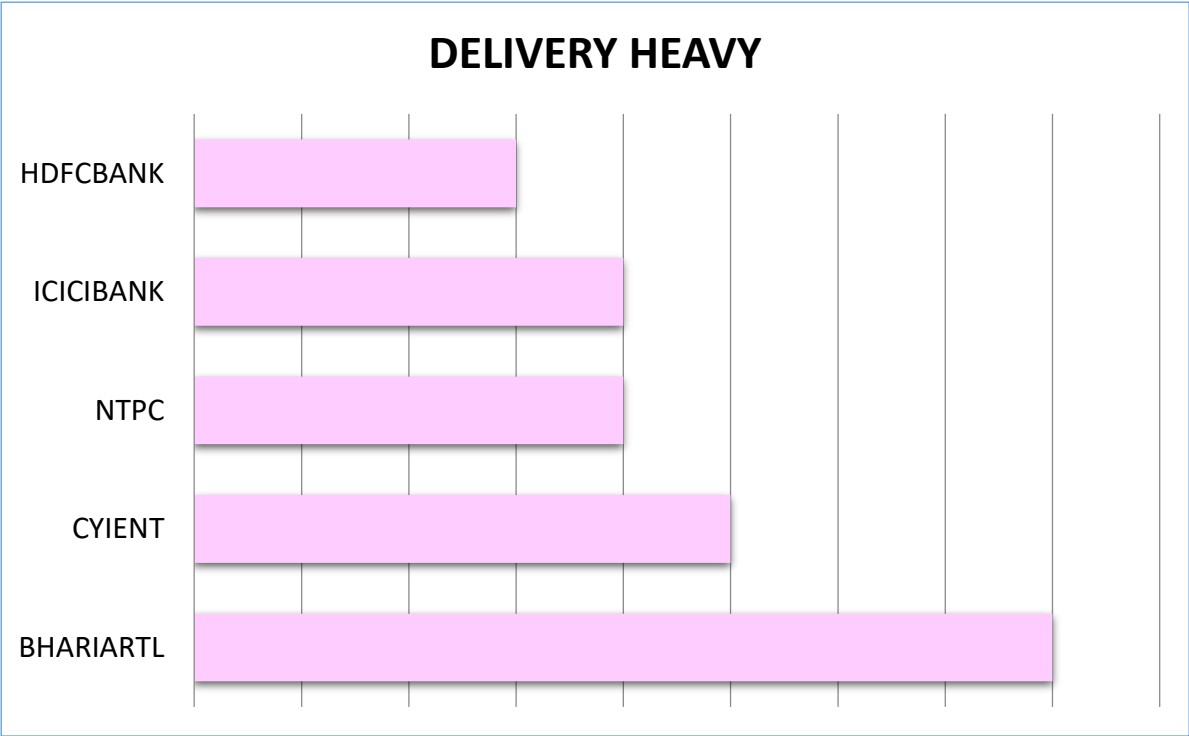
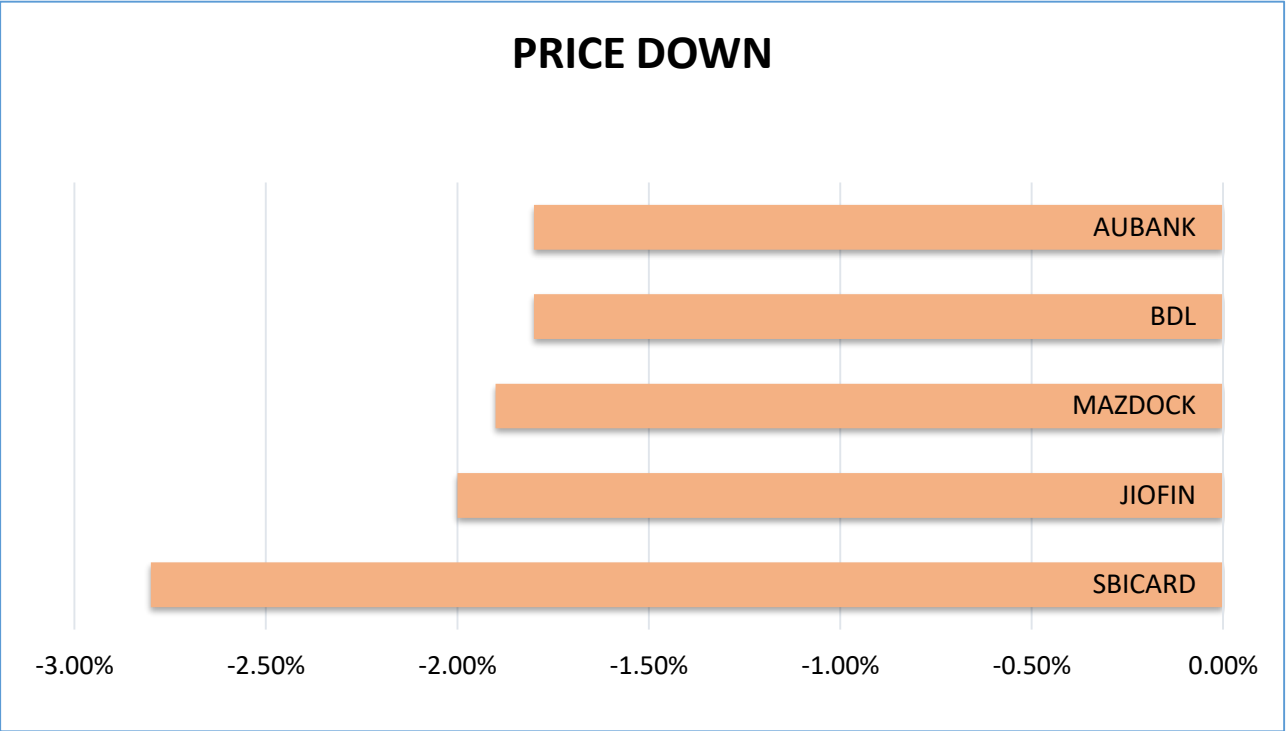


FII - DII Activities:

| Activity | FII (Cr) | DII (Cr) |
|----------|----------|-----------|
| Cash | -1614.32 | 1787.68 |
| Adv/Dec | | |
| Advance | Decline | A/D Ratio |
| 154 | 74 | 2.15 |

15th July 2025

Market Mood





Results Calendar

| Date | RESULTS | Expected | Previous |
|--------------|-----------|----------|----------|
| 15th July 25 | HDFC LIFE | - | - |

CALL OF THE DAY

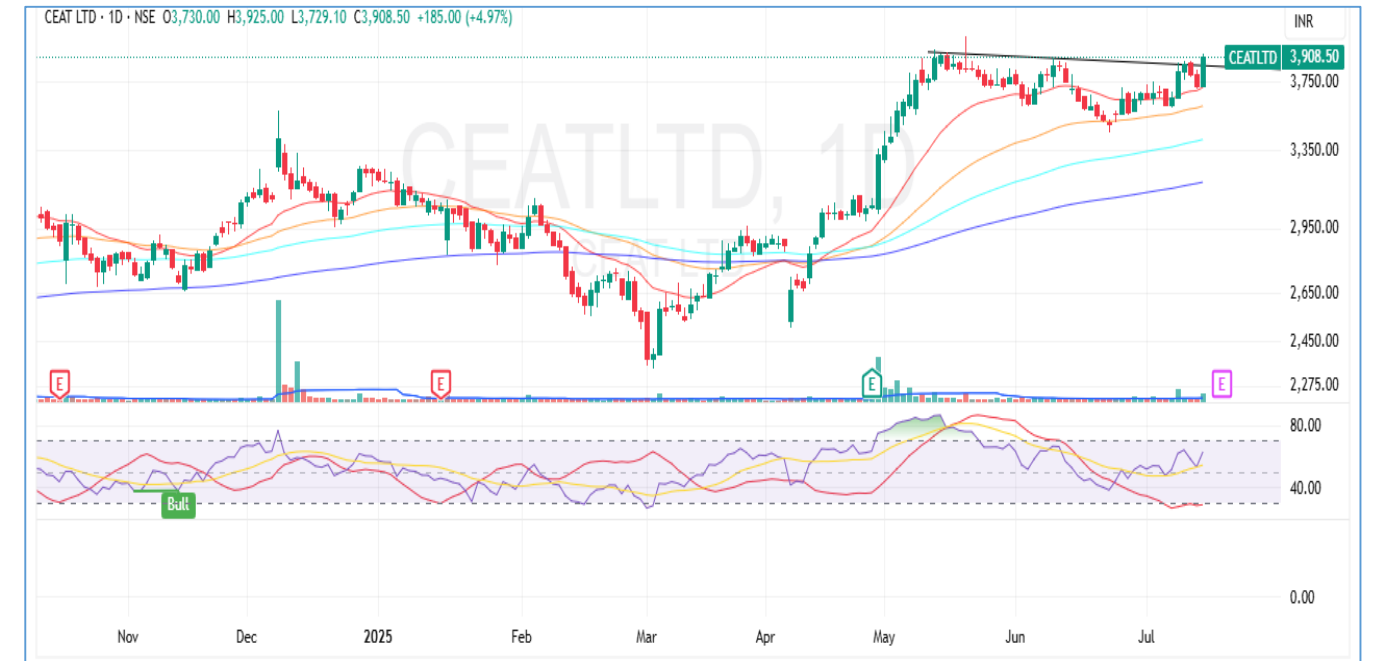


ARKADE (Intraday pick)

Buy Range : 205.60 - 206 SL :- 202.50 Target:- 211.80

ARKADE has witnessed a breakout from a consolidation range on the daily timeframe, accompanied by a strong bullish candlestick and above-average volume (based on the 20-day average), indicating renewed buying interest. The stock is trading firmly above its 20, 50, and 100-day EMAs, underscoring the strength of the ongoing uptrend. Additionally, the Relative Strength Index (RSI) stands at 61.68 and is trending higher, signaling strong bullish momentum and the potential for further upside in the near term.

DELIVERY CALL



CEATLTD (Delivery pick)

Buy Range :- 3908 - 3920 SL:- 3790 (daily closing basis) Target :- 4144

CEATLTD has witnessed a breakout from an Adam & Eve chart pattern on the daily timeframe, accompanied by a strong bullish candlestick and above-average volume (based on the 20-day average), indicating robust buying interest. The stock is trading decisively above its 20, 50, 100, and 200-day EMAs, reinforcing the strength of the prevailing uptrend. Moreover, the Relative Strength Index (RSI) stands at 62.46 and is trending higher, suggesting sustained bullish momentum and the potential for further upside in the near term.

15th July 2025

Market Mood



Nifty 50 Snapshot

| Script | LTP | CHNG | %CHNG | R1 | R2 | S1 | S2 |
|------------|-----------|--------|-------|--------|----------|-----------|-----------|
| NIFTY 50 | 25,082.30 | -67.55 | -0.27 | 25,193 | 25304.61 | 24,971.15 | 24,859.99 |
| ETERNAL | 271 | 7.65 | 2.9 | 282 | 292.5741 | 260.21 | 249.43 |
| TITAN | 3,402.00 | 40.4 | 1.2 | 3,444 | 3485.716 | 3,360.14 | 3,318.28 |
| HDFCLIFE | 767 | 8 | 1.05 | 777 | 786.083 | 757.46 | 747.92 |
| ONGC | 244.15 | 2.39 | 0.99 | 247 | 249.0948 | 241.68 | 239.21 |
| GRASIM | 2,789.00 | 27 | 0.98 | 2,825 | 2860.875 | 2,753.06 | 2,717.12 |
| INDUSINDBK | 865.95 | 7.1 | 0.83 | 877 | 888.7332 | 854.56 | 843.17 |
| SBILIFE | 1,850.00 | 14.8 | 0.81 | 1,866 | 1882.727 | 1,833.64 | 1,817.27 |
| COALINDIA | 383.9 | 2.95 | 0.77 | 387 | 390.6487 | 380.53 | 377.15 |
| ADANIENT | 2,578.00 | 19.3 | 0.75 | 2,618 | 2658.963 | 2,537.52 | 2,497.04 |
| M&M | 3,093.20 | 20 | 0.65 | 3,125 | 3156.822 | 3,061.39 | 3,029.58 |
| HEROMOTOCO | 4,244.80 | 26.1 | 0.62 | 4,283 | 4322.167 | 4,206.12 | 4,167.43 |
| ITC | 419.35 | 2.55 | 0.61 | 422 | 424.1145 | 416.97 | 414.59 |
| SUNPHARMA | 1,681.70 | 9.7 | 0.58 | 1,698 | 1714.757 | 1,665.17 | 1,648.64 |
| APOLLOHOSP | 7,215.00 | 25.5 | 0.35 | 7,269 | 7323.737 | 7,160.63 | 7,106.26 |
| SHRIRAMFIN | 670.3 | 2.05 | 0.31 | 677 | 683.4501 | 663.72 | 657.15 |
| JSWSTEEL | 1,040.40 | 3.2 | 0.31 | 1,049 | 1056.812 | 1,032.19 | 1,023.99 |
| TATASTEEL | 160.25 | 0.41 | 0.26 | 161 | 162.5693 | 159.09 | 157.93 |
| ULTRACEMCO | 12,520.00 | 25 | 0.2 | 12,612 | 12703.23 | 12,428.39 | 12,336.77 |
| BAJAJ-AUTO | 8,080.00 | 13 | 0.16 | 8,134 | 8187.264 | 8,026.37 | 7,972.74 |
| ADANIPORTS | 1,433.00 | 1.3 | 0.09 | 1,446 | 1459.149 | 1,419.93 | 1,406.85 |
| BHARTIARTL | 1,923.10 | 1.2 | 0.06 | 1,941 | 1958.495 | 1,905.40 | 1,887.70 |
| SBIN | 809.1 | 0.45 | 0.06 | 814 | 819.3706 | 803.96 | 798.83 |
| ICICIBANK | 1,421.90 | - | - | 1,428 | 1434.345 | 1,415.68 | 1,409.45 |
| HDFCBANK | 1,982.90 | -0.8 | -0.04 | 1,994 | 2005.992 | 1,971.35 | 1,959.81 |

15th July 2025

Market Mood



| Script | LTP | CHNG | %CHNG | R1 | R2 | S1 | S2 |
|------------|-----------|-------|-------|--------|----------|-----------|-----------|
| AXISBANK | 1,172.90 | -0.9 | -0.08 | 1,185 | 1196.191 | 1,161.25 | 1,149.61 |
| HINDUNILVR | 2,517.40 | -2.2 | -0.09 | 2,546 | 2574.775 | 2,488.71 | 2,460.02 |
| CIPLA | 1,482.90 | -2.1 | -0.14 | 1,494 | 1504.185 | 1,472.26 | 1,461.61 |
| POWERGRID | 297.85 | -0.7 | -0.23 | 300 | 301.7062 | 295.92 | 293.99 |
| DRREDDY | 1,251.80 | -2.9 | -0.23 | 1,262 | 1271.657 | 1,241.87 | 1,231.94 |
| MARUTI | 12,534.00 | -40 | -0.32 | 12,658 | 12782.97 | 12,409.51 | 12,285.03 |
| NTPC | 341.5 | -1.2 | -0.35 | 345 | 347.7384 | 338.38 | 335.26 |
| BEL | 407.5 | -1.8 | -0.44 | 411 | 415.4112 | 403.54 | 399.59 |
| NESTLEIND | 2,393.00 | -10.5 | -0.44 | 2,417 | 2441.54 | 2,368.73 | 2,344.46 |
| TATACONSUM | 1,071.00 | -5.8 | -0.54 | 1,079 | 1087.534 | 1,062.73 | 1,054.47 |
| RELIANCE | 1,486.40 | -8.8 | -0.59 | 1,500 | 1513.24 | 1,472.98 | 1,459.56 |
| HINDALCO | 666.9 | -4.05 | -0.6 | 677 | 686.1984 | 657.25 | 647.60 |
| KOTAKBANK | 2,206.60 | -14 | -0.63 | 2,227 | 2247.165 | 2,186.32 | 2,166.04 |
| BAJAJFINSV | 2,000.20 | -17 | -0.84 | 2,020 | 2038.871 | 1,980.86 | 1,961.53 |
| TRENT | 5,313.00 | -51 | -0.95 | 5,381 | 5449.779 | 5,244.61 | 5,176.22 |
| TATAMOTORS | 674.8 | -7 | -1.03 | 682 | 688.746 | 667.83 | 660.85 |
| TCS | 3,227.50 | -38.5 | -1.18 | 3,279 | 3329.852 | 3,176.32 | 3,125.15 |
| EICHERMOT | 5,541.50 | -71 | -1.27 | 5,610 | 5678.461 | 5,473.02 | 5,404.54 |
| LT | 3,493.90 | -46.7 | -1.32 | 3,536 | 3577.637 | 3,452.03 | 3,410.16 |
| ASIANPAINT | 2,404.80 | -34.4 | -1.41 | 2,443 | 2480.839 | 2,366.78 | 2,328.76 |
| BAJFINANCE | 920 | -13.5 | -1.45 | 936 | 951.8707 | 904.06 | 888.13 |
| HCLTECH | 1,613.50 | -24.8 | -1.51 | 1,639 | 1663.605 | 1,588.45 | 1,563.40 |
| INFY | 1,570.50 | -24.4 | -1.53 | 1,595 | 1620.244 | 1,545.63 | 1,520.76 |
| WIPRO | 254.25 | -4.05 | -1.57 | 260 | 264.9964 | 248.88 | 243.50 |
| TECHM | 1,575.00 | -27.5 | -1.72 | 1,602 | 1628.48 | 1,548.26 | 1,521.52 |
| JIOFIN | 319.3 | -6.5 | -2 | 326 | 332.5189 | 312.69 | 306.08 |
| | | | | | | | |

HARSHITA DARAK
Technical Research Analyst

Disclosure: M/s. Bonanza Portfolio Ltd here by declares that views expressed in this report accurately reflect view point with subject to companies/securities. M/s. Bonanza Portfolio Ltd has taken reasonable care to achieve and maintain independence and objectivity in making any recommendations. The Analysts engaged in preparation of this Report or his/her relative: - (a) do not have any financial interests in the subject company mentioned in this Report; (b) do not own 1% or more of the equity securities of the subject company mentioned in the report as of the last day of the month preceding the publication of the research report; (c) do not have any material conflict of interest at the time of publication of the Report. The Analysts engaged in preparation of this Report:- (a) have not received any compensation from the subject company in the past twelve months; (b) have not managed or co-managed public offering of securities for the subject company in the past twelve months; (c) have not received any compensation for investment banking or merchant banking or brokerage services from the subject company in the past twelve months; (d) have not received any compensation for products or services other than investment banking or merchant banking or brokerage services from the subject company in the past twelve months; (e) has not received any compensation or other benefits from the subject company or third party in connection with the Report; (f) has not served as an officer, director or employee of the subject company; (g) is not engaged in market making activity for the subject company.

M/s. Bonanza Portfolio Ltd is a registered Research Analyst under the regulation of SEBI, the year 2014. The Regn No. INH100001666 and research analyst engaged in preparing reports is qualified as per the regulation's provision.

Disclaimer: This research report has been published by M/s. Bonanza portfolio Ltd and is meant solely for use by the recipient and is not for circulation. This document is for information purposes only and information / opinions / views are not meant to serve as a professional investment guide for the readers. Reasonable care has been taken to ensure that information given at the time believed to be fair and correct and opinions based thereupon are reasonable, due to the nature of research it cannot be warranted or represented that it is accurate or complete and it should not be relied upon as such. If this report is inadvertently send or has reached to any individual, same may be ignored and brought to the attention of the sender. Preparation of this research report does not constitute a personal recommendation or take into account the particular investment objectives, financial situations, or needs of individual clients. Past performance is not a guide for future performance. This Report has been prepared on the basis of publicly available information, internally developed data and other sources believed by Bonanza portfolio Ltd to be reliable. This report should not be taken as the only base for any market transaction; however this data is representation of one of the support document among other market risk criterion. The market participant can have an idea of risk involved to use this information as the only source for any market related activity.

The distribution of this report in definite jurisdictions may be restricted by law, and persons in whose custody this report comes, should observe, any such restrictions. The revelation of interest statements integrated in this analysis are provided exclusively to improve & enhance the transparency and should not be treated as endorsement of the views expressed in the analysis. The price and value of the investments referred to in this report and the income from them may go down as well as up. Bonanza portfolio Ltd or its directors, employees, affiliates or representatives do not assume any responsibility for, or warrant the accuracy, completeness, adequacy and reliability of such information / opinions / views.

While due care has been taken to ensure that the disclosures and opinions given are fair and reasonable, none of the directors, employees, affiliates or representatives of M/s. Bonanza portfolio Ltd shall be liable. Research report may differ between M/s. Bonanza portfolio Ltd RAs and other companies on account of differences in, personal judgment and difference in time horizons for which recommendations are made. Research entity has not been engaged in market making activity for the subject company. Research analyst has not served as an officer, director or employee of the subject company. Research analyst has not received any compensation/benefits from the Subject Company or third party in connection with the research report.

Bonanza Portfolio Ltd. Bonanza House, Plot No. M-2, Cama Industrial Estate. Walbhat Road, Goregaon (E), Mumbai – 400063
Web site: <https://www.bonanzaonline.com> SEBI Regn. No.: INZ000212137 BSE CM: INB 011110237 | BSE F&O: INF 011110237 |
MSEI: INE 260637836 | CDSL: 120 33500 | NSDL: a) IN 301477 | b) IN 301688 (Delhi) PMS: INP 000000985 | AMFI: ARN -0186